



PARTS DRAWING

MCE MASTER
CLIMATE SOLUTIONS

**Master 30kw
3 Phase Fan Heater**

**Product Code:
B30EPR**



Serial Number Range:

From:

To:

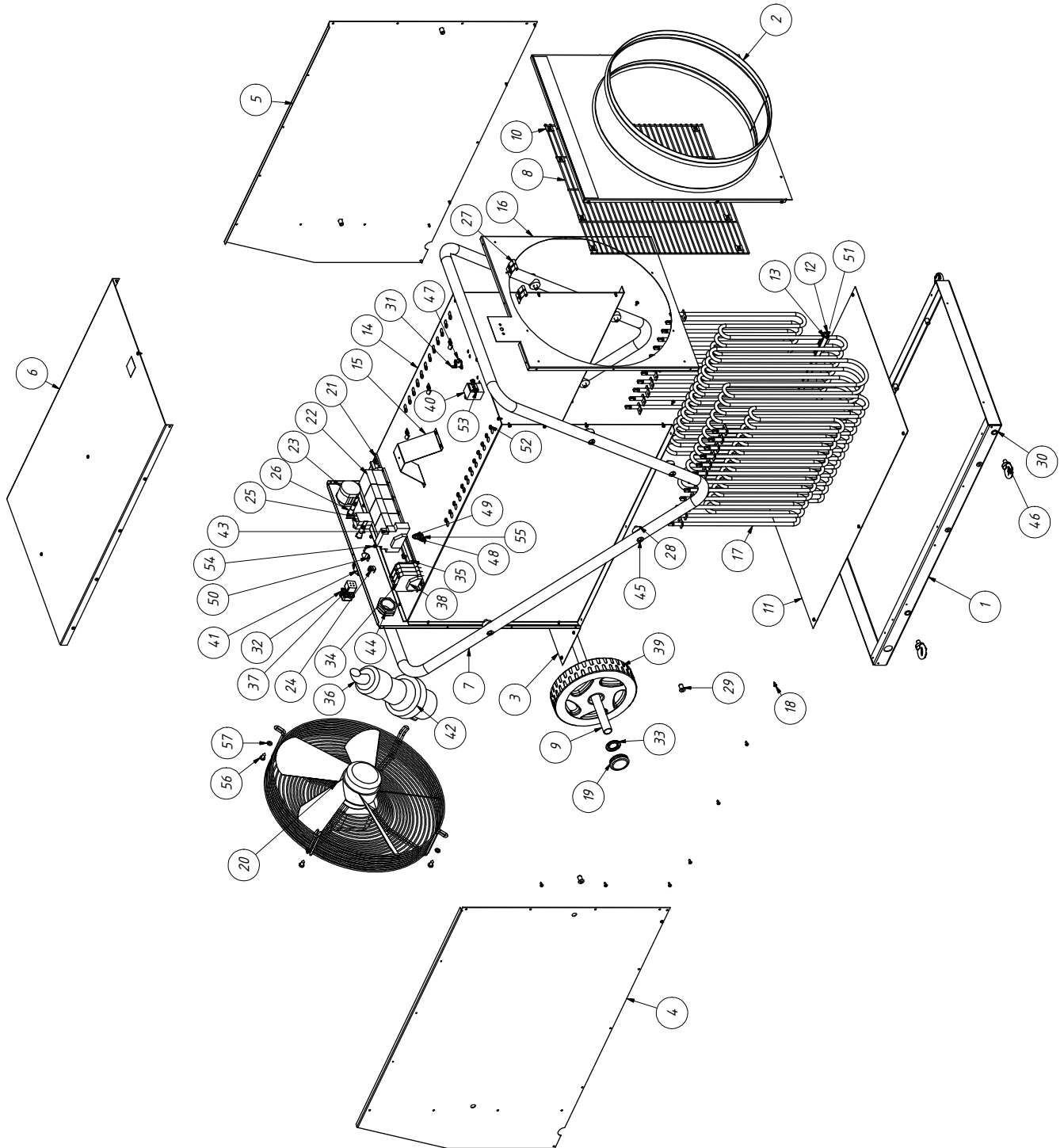
Year Of Manufacture: 2012

***Please note, when ordering online via our website if the part number is not recognised,
please Email spares@hscgroupuk.co.uk or Telephone 0115 946 1988**

KEEP THIS BOOKLET FOR FUTURE REFERENCE

Nottingham: 0115 946 1988 • London: 0208 830 3333 ✉ Nottingham: sales@hscgroupuk.co.uk • London: sean@hscgroupuk.co.uk 🌐 www.hscgroupuk.co.uk

The Hire Supply Company Terms & Conditions Apply At All Time E&OE



Pos.	Code NR	Description
1	4511.768	BOTTOM COVER
2	4511.773	FRONT COVER
3	4511.774	BACK COVER
4	4511.772	COVER RIGHT SIDE
5	4511.771	COVER LEFT SIDE
6	4511.775	TOP COVER
7	4511.776	FRONT HANDLE PIPE
8	4511.767	PROTECTION MESH
9	4511.784	AXLE
10	4510.140	WASHER FIXING
11	4511.770	HEAT SHIELD BOTTOM
12	4511.782	HEATER LEFT STABILIZER 12
13	4511.781	HEATER RIGHT STABILIZER 12
14	4511.785	HEAT SHIELD SPLIT
15	4511.780	STRUT
16	4511.786	HEAT FRONT SHIELD
17	4510.377	HEATING ELEMENT 230V 2500W
18	4510.847	TAPPING SCREW ST3,5X9,5
19	4111.480	WHEEL PLUG (42x10)
20	4510.325	AXIAL FAN MOTOR 180W/380V
21	4510.459	DIN RAIL 35X7,5X450MM
22	4510.454	CONTACTOR 4kW / 9A / 400AC
23	4510.429	ROTARY SWITCH
24	4510.647	CABLE BEND
25	4510.462	OVER-HEAT THERMOSTAT 16A/250V 80°C
26	4510.460	INDICATOR LIGHT 400V
27	4510.872	FITTING THE CAPILLARY TUBE FI 6
28	4511.674	SADDLE WASHER 26-26
29	4517.808	BLIND RIVET NUT M6
30	4513.800	BLIND RIVET NUT M8
31	4510.463	OVERHEAT SENSOR 16A/250V 40oC/NO
32	4162.467	CAP FOR THERMOSTAT SOCKET
33	4111.072	WHEEL HOLDER
34	4510.456	SCREW CONNECTION
35	4510.457	END PLATE
36	4510.461	POWER CORD
37	4514.406	FEMALE INSERT 3P+PE
38	4510.458	HOLDERS RAIL TS35
39	4111.916	WHEEL 200
40	4514.422	CAPILLARY THERMOSTAT 16A/400V 27,5oC – 87,5oC
41	4514.611	SOCKET CASE
42	4510.455	PLUG 63A/400V 3P+N+E
43	4510.464	PHASE CONTROL RELAY
44	4511.677	GLAND PG29
45	4510.858	SCREW M6X40
46	4514.801	LIFTING EYE BOLT M8
47	4510.841	SCREW ST3,9X9,5
48	4510.830	HEXAGON NUT M6
49	4517.803	SCREW M6X25
50	4513.802	BOLT M3x16
51	4510.850	TAPPING SCREW 4,2x16
52	4510.821	TAPPING SCREW ST4.8X13
53	4510.852	SCREW M4X6
54	4513.807	HEXAGON NUT M3
55	4510.831	SPRING LOCK WASHERS
56	4510.860	TAPPING SCREW ST6,3X16
57	4510.859	PLAIN WASHER M6



Recycling



ENVIRONMENTAL PROTECTION: Please recycle any unwanted materials as opposed to disposing them as general waste. It is recommended the original is retained and used to store the product when not in use for prolonged periods of time. If this is not applicable ensure the materials are sorted and recycled in accordance with local regulations.



SPECIFICATION CHANGE: It is our policy to continually improve products to ensure these meet the rigours of the industry we serve. Therefore, as such we reserve the right to alter specifications, data, components & parts with-out prior notice.

WARRANTY: Please refer to the manufactures terms & conditions.

IMPORTANT: No liability will be accepted for the incorrect use of this product.

KEEP THIS BOOKLET FOR FUTURE REFERENCE

📞 Nottingham: 0115 946 1988 • London: 0208 830 3333 ✉ Nottingham: sales@hscgroupuk.co.uk • London: sean@hscgroupuk.co.uk 🌐 www.hscgroupuk.co.uk

The Hire Supply Company Terms & Conditions Apply At All Time E&OE