

ELITE OIL FILLED RADIATOR OPERATING INSTRUCTIONS



MODEL : OFRH2.5 YL-R09T-11 : 2500W

WARNING: READ THIS OWNER'S MANUAL CAREFULLY BEFORE USE

When using an electrical appliance, basic safety precautions should always be observed, including the following:

WARNING: To reduce the risk of fire, electrical shock, or injury to persons:

1. This appliance is not intended for use by persons (including children) with reduced physical, sensory or mental capabilities, or lack of experience and knowledge, unless they have been given supervision or instruction concerning use of the appliance by a person responsible for their safety.
2. Children should be supervised to ensure that they do not play with the appliance.
3. The product is for household use only.

4. Connect the appliance to single phase AC supply of the voltage specified on the rating plate.
5. In order to avoid overheating, do not cover the heater.
6. Never leave the heater unattended while it is in use. Always turn the product to the OFF position and unplug it from the electrical outlet when not in use.
7. Extreme caution is necessary when any heater is used by or near children, invalids or elderly person and whenever the heater is left operating and unattended.
8. The heater must not be located immediately below an electrical socket-outlet.
9. Do not run cord under carpeting and do not cover cord with throw rugs, runners or the like. Arrange cord away from traffic area and where it will not be tripped over.
10. Do not operate the heater with a damaged cord or plug, or after the heater malfunctions, has been dropped, or damaged in any manner.
11. If the supply cord is damaged, it must be replaced by the manufacturer or its service agent or a similarly qualified person to avoid a hazard.
12. Avoid the use of an extension cord as this may overheat and cause a risk of fire.
13. Use the heater in a well-ventilated area. Do not insert or allow objects to enter any ventilation or exhaust opening. To prevent a possible fire, do not block air intakes or exhaust openings in any manner. Do not use on soft surfaces, like a bed, where openings may become blocked. Use the heater on flat, dry surfaces only.
14. Do not place this heater near flammable materials, surfaces or substances, as there may be a risk of fire. Keep the above flammable materials, surfaces or substances at least 1m from the front of the product and keep them away from the sides and rear.
15. Do not use the heater in any areas where petrol, oil or other flammable liquids are stored e.g. Garages or workshops as a hot, arcing or sparking parts inside the heater.
16. Don't use this heater in the immediate surroundings of a bath, a shower or a swimming pool. Never locate the heater where it may fall into bathtub or other water container.
17. This heater is hot when in use. To avoid burns and personal injury, do not let bare skin touch hot surfaces. If provided, use handles when moving the product.
18. Be sure that no other appliances are in use on the same electrical circuit as your

1

- product as an overload can occur.
19. This heater is filled with a precise quantity of special oil.
 20. Repairs requiring opening of the oil container are only to be made by the manufacturer or his service agent who should be contacted if there is an oil leakage.
 21. Regulations concerning the disposal of oil when scrapping the appliance have to be followed.
 22. The heater should not be used in a room, of which the floor area is less than 5 M².
 23. The cord shouldn't be placed nearby the hot surface of the appliance.

YL-Q15T SPECIFICATIONS



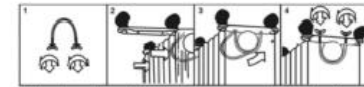
1. Handle	2. Power switch
3. Thermostat knob	4. Timer
5. Cord storage	6. Radiant fins
7. Castor	

ASSEMBLY INSTRUCTIONS

The heater is packaged with the feet unattached. You must attach them before operating the heater.

WARNING: Do not operate without feet attached. Do operate the heater only in the upright position (feet on the bottom, controls on the top), any other position could create a hazardous situation.

2



1. Place the radiator body upside-down on a scratch-free location, make sure it is stable and will not fall.
 2. Screw off the wing nuts from the U-shaped bolt provided, attach the U-shaped bolt to the U-facing flange between first and second fins (near the front cover).
 3. To attach the castor mounting plate to the radiator body, you should insert the threaded ends of the U bolt in the holes on the castor mounting plate.
 4. Screw the wing nuts back to the U bolt and fasten the wing nut properly.
- Note: Do not over tighten, which may cause the damage of radiator flange.**
5. Screw off spherical nut from the castor, align the shaft to the hole of the castor mounting plate, insert it, and screw on the spherical nut.
 6. Repeat 2, 3, 4 and 5 on the rear of radiator for mounting of the rear castors.
- Note: The rear castors must be mounted between the end two fins.**



USE OF TIMER

1. Regulate the time of timer according to the clock by turning it clockwise (DO NOT TURN IT COUNTER CLOCKWISE)
2. The timer has a small switch, the function is as follow: I=Unit is always ON, II=Timer function is ON
3. Set the timer to II position. There are 96 small plastic pins on

3

the timer, each correspond to 15 minutes interval. Push outward the pins corresponding to the time you want the heater to turn ON and push inward the pins corresponding to the time you want the heater to turn OFF

CAUTION:

- A. Do not use the timer function unattended.
- B. The heater will not operate if timer is set to the II position and the pins are not Activated according to the times required.
- C. If the heater loses its electricity supply, e.g. Switched off at the main's socket or in the event of a power failure, the time should be reset after the power on again.

4. The pilot light will be on when the timer is set to ON position or the timing function is activated.

INSTRUCTIONS FOR USE

1. Before using the heater, make sure that it is on a flat and stable surface, damage may occur if it is placed on an incline or decline.
2. Set all the controls to OFF position and insert the plug into a socket-outlet with well grounded. Be sure that plug fits firmly.
3. Rotate the thermostat knob clockwise to MAX position and switch the heater on as follow: the switch I for low heat, the switch II for medium heat and both switches on for high heat.
4. When your room reaches the desired temperature, now slowly rotate the thermostat knob counter clockwise until the pilot light goes out. The thermostat can now be left at this setting. As soon as the room temperature has dropped below the set temperature, the unit will switch itself on automatically until the set temperature has been reached again. In this way the room temperature remains constant with the most economical use of electricity.
5. If you want to change the room temperature setting, rotate the thermostat knob clockwise to raise the temperature, or counter clockwise to lower it.
6. This heater includes an overheat protection system that shuts off the heater when parts

4

of the heater are getting excessively hot.

7. To completely shut the heater off, turn all the controls to OFF, and remove plug from the socket-outlet.

MAINTENANCE

1. Always remove the plug from the socket-outlet and allow the radiator to cool down before clean it.
2. Wipe radiator with a soft damp (not wet) cloth.

WARNING:

Do not immerse the heater in water.

Do not use any cleaning chemicals such as detergents and abrasives.

Do not allow the radiator to get wet as this could create a hazard.

3. To store away the heater, wind the cable round the cable holder and store the heater in a clean dry place.
4. In case of malfunction or doubt, do not try to repair the radiator yourself, it may result in a fire hazard or electric shock.

CONFORMITY WITH DIRECTIVES

This product is CE marked in accordance with Directives 2014/30/EU (Low Voltage) and the EMC directive (2014/30/EU), as amended.

Correct Disposal of this product



This marking indicates that this product should not be disposed with other household wastes throughout the EU. To prevent possible harm to the environment or human health from uncontrolled waste disposal, recycle it responsibly to promote the sustainable reuse of material resources. To return your used device, please use the return and collection systems or contact the retailer where the product was purchased. They can take this product for environmental safe recycling.

5