

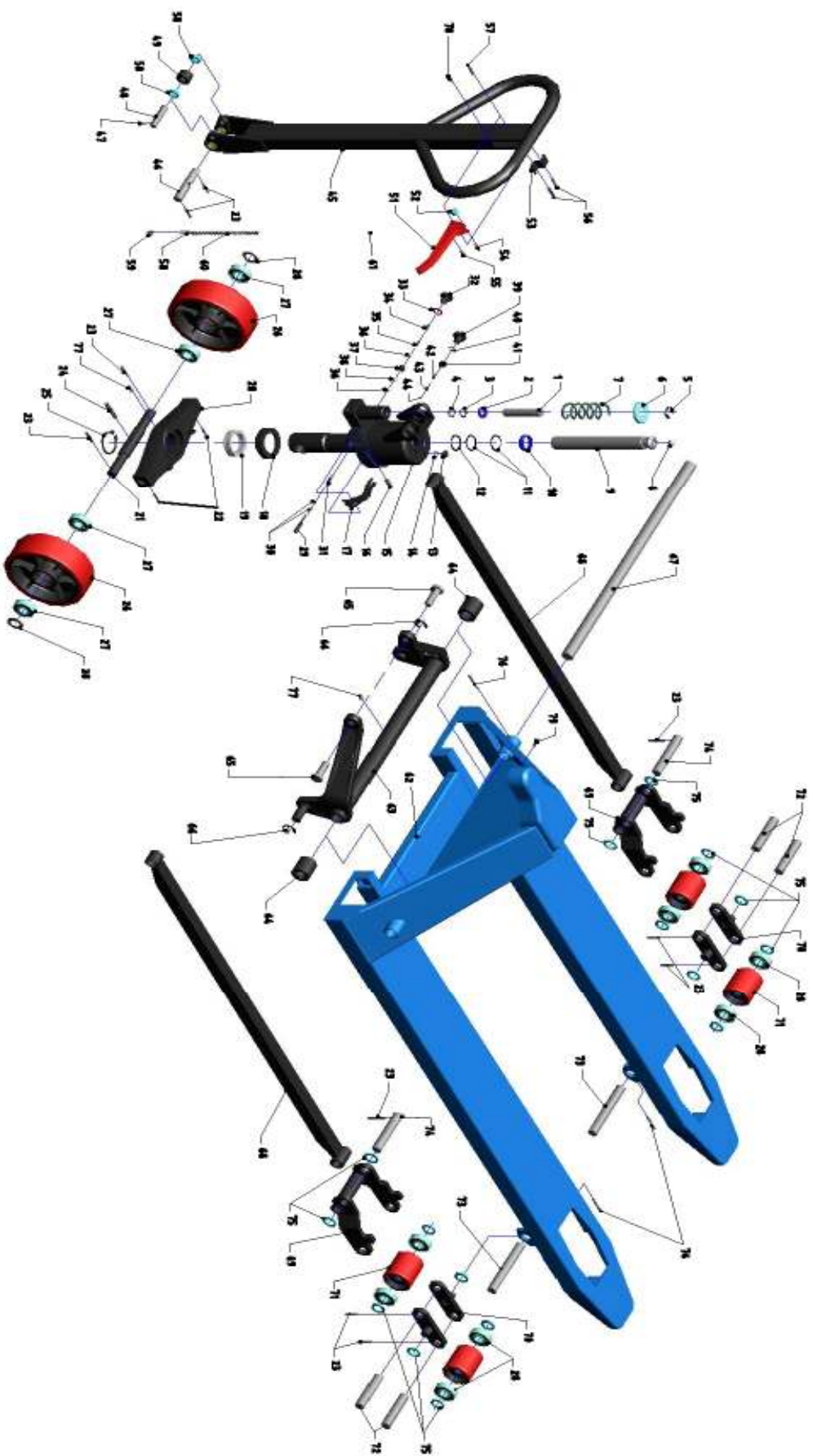
PART LIST

XTN540-1150

Part No.	Description	Q.ty	Part No.	Description	Q.ty
1	Plunger Piston	1	41	Relief Screw	1
2	Dust Seal Ø18 - Ø26 - 4/6	1	42	Spring	1
3	O-ring Ø17,8 x 2,4	1	43	Ball housing	1
4	Back-up ring Ø18 x Ø22 x 1,5	1	44	Steel Ball Ø5	1
5	E-ring Ø18	1	45	Handle BTN - 2500	1
6	Spring Cap	1	46	Handle Axis	1
7	Spring	1	47	Spring Pin Ø3 x 25	1
8	Steel Ball Ø14	1	48	Roller Pin	1
9	Ram Piston	1	49	Roller	1
10	Dust Seal Ø38 - Ø30 - 5,5/6,5	1	50	Bushing	2
11	O-ring Ø29,5 x 3,65	2	51	Lever	1
12	Back-up ring Ø30 x Ø36 x 1,5	1	52	Plastic Roller	1
13	Oil Plug	1	53	Spring Plate	1
14	O-ring Ø10 x 1,8	1	54	Spring Pin Ø4 x 20	1
15	Pump Body BM - N30	1	55	Spring Pin Ø4 x 12	1
16	Spring Pin Ø8 x 25	1	56	Spring Pin Ø4 x 30	2
17	Cam	1	57	Spring Pin Ø6 x 30	1
18	Bearing Base	1	58	Anchor Bolt	1
19	Bearing 51109	1	59	Nut M6	1
20	Table	1	60	Chain	1
21	Steering Wheel Axis	1	61	Release Rod	1
22	Spring Pin Ø6 x 35	2	62	Fork	1
23	Spring Pin Ø5 x 30	10	63	Lifting Yoke	1
24	Spring Pin Ø6 x 45	1	64	Bushing	2
25	Snap Ring Ø45	1	65	Table Pin	2
26	Steering Wheel Ø180 x 50	2	66	E-ring Ø20	2
27	Bearing 6204	12	67	Lifting Yoke Axis 540	1
28	Washer Ø20 x Ø40 x 3	2	68	Rod 1150	2
29	Release Nozzle	1	69	Arm	2
30	O-ring Ø5 x 1,8	2	70	Steel Plate	4
31	Spring	1	71	Load Wheel	4
32	Release Plug	1	72	Load Wheel Axis	4
33	Copper Washer Ø14.5 x Ø22 x 1.5	1	73	Arm Pin	2
34	Spring	1	74	Rod Pin	2
35	Spring	1	75	Washer	4
36	Steel Ball Ø6	2	76	Spring Pin 5 x 40	3
37	Valve Housing	1	77	Grease Nipple	1
38	Steel Ball Ø9	1	78	Rubber	1
39	Relief Screw	1	79	Screw M6 x 10	1
40	O-ring Ø11.5 x 2.8	1			

HAND PALLET TRUCK

XTN540-1150



ICHIMENS®