



44W ANTI-CORROSIVE FITTING

Product Code: LED5H
INSTRUCTIONS FOR USE

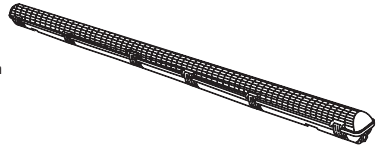


IMPORTANT: PLEASE READ THESE INSTRUCTIONS CAREFULLY. NOTE THE SAFE OPERATIONAL REQUIREMENTS, WARNINGS AND CAUTIONS. USE THE PRODUCT CORRECTLY AND WITH CARE FOR THE PURPOSE FOR WHICH IT IS INTENDED. FAILURE TO DO SO MAY CAUSE DAMAGE AND/OR PERSONAL INJURY AND WILL INVALIDATE THE WARRANTY. PLEASE KEEP INSTRUCTIONS SAFE FOR FUTURE USE.

1. THE MAIN STRUCTURE PARAMETERS

Power Supply: 100-240Volt~50/60Hz
LED Consumption: 44Watt
Number of LED: 200 LED SMD2835
Color Temperature: 6400K
Lumen: 4050LM
Class: I

Safety Rating: IP65
Lamp Head size: L1576xW89xH93mm
Light angle: 120
Ambient: -25°C ~ +60°C
Used power cord at least 3G1.5mm;



2. PRECAUTIONS

- To ensure successful installation please read these instructions and review diagrams carefully before installation.
- Installation must be in accordance with local standards and legislation and must only be completed by a competent person.
- Before commencing installation please ensure the power supply has been isolated to avoid the risk of electric shock
- The installer should check the lamp and body carefully for signs of damage before installation.
- Before installation check that the power supply is the same as stated on the data label of the product.
- Do not install the product in the rain or an wet area, the product is rated IP65 only when the diffuser is fitted.
- Do not exceed the rated power loading for each type of lamp.
- This product is of class 1 construction and must be earthed.

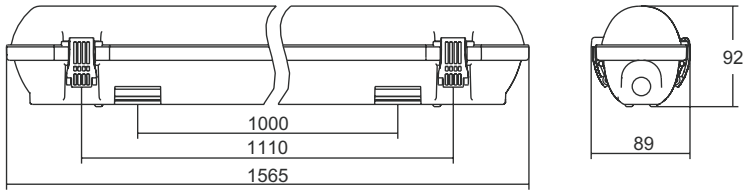
3. INSTALLATION

- Unpack/remove cover and gear tray from body shell.
- Fix stainless steel mounting brackets as below: 1000mm CTRS for 1565mm long body(5ft).
- Attach body to installed mounting clips.
- Install mains rated circular flexible cable into body shell using supplied cable gland.
- Connect main supply to terminal block on gear tray and ensure gland nut is tight on cable.
- Fit gear tray to body and diffuser to body with clips provided.
- Connect the power supply wire(Live)and brown fixture wire with terminal block,repeat with power supply wire (Neutral) and blue fixture wire ,connect the grounding wire and green/yellow fixture wire.

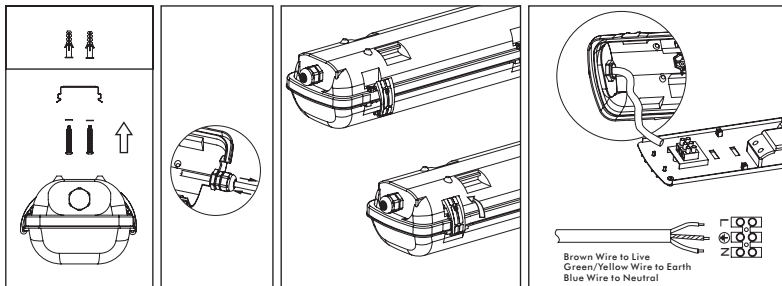
4. SAFETY WARNING

- This unit must only be connected to an appropriate power supply.
- When not in use always disconnect from the power supply.
- Do not remove plug from mains supply by pulling on power cord.
- In some States, Territories or Work Sites, Operator training or equipment documentation may be required.
- Please check with your Local Regulatory Authority prior to use.
- The unit must only be connected to a reduced low voltage power supply.
- Please read installation instructions before connecting to mains supply. Ensure polarities are not reversed.
- Used batteries must be removed in accordance with local laws and regulations of the battery recycling by specialized departments,do not dispose of in the rubbish or dismantling their own in order to avoid environmental pollution and other accidents to happen!

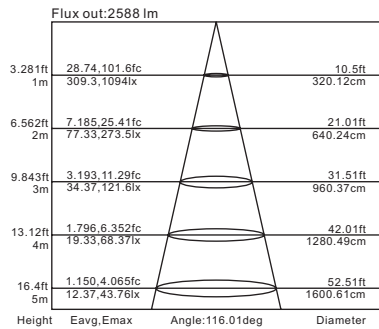
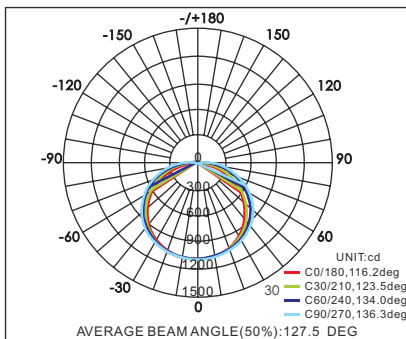
Overall dimensions



Installation



Luminous intensity distribution diagram (Normal mode)



NOTE This marking indicates that this product should not be disposed with other household wastes throughout the EU. To prevent possible harm to the environment or human health from uncontrolled waste disposal, recycle it responsibly to promote the sustainable reuse of material resources. To return your used device, please use the return and collection systems or contact the retailer where the product was purchased. They can take this product for environmental safe recycling.