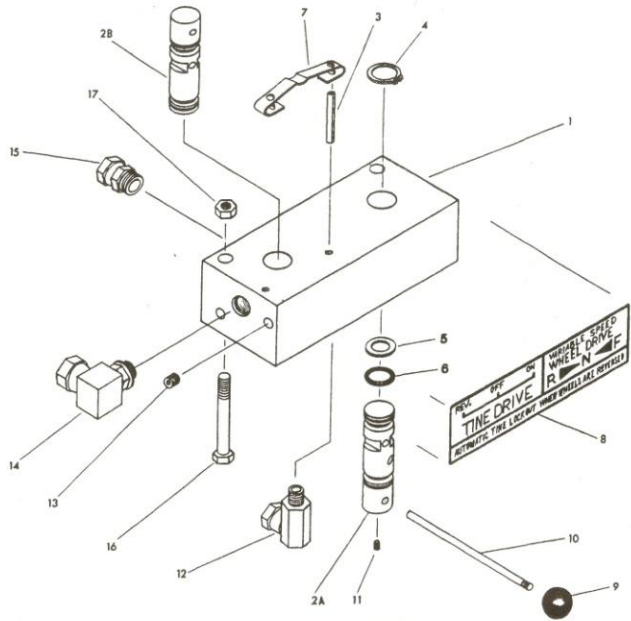


CHASSIS ASSEMBLY,DRIVEMOTOR&HYD FILTER

ITEM	PART No.	DESCRIPTION	QTY
1	3-01	DRIVE CHAIN SPLIT LINK ASS.	1
2	3-02	DRIVE CHAIN	1
3	3-03	DRIVE SPROCKET	1
4	3-04	GRUB SCREW	1
5	3-05	KEY	1
6	3-06	TRAVEL DRIVE MOTOR	1
7	3-07	WASHER	2
8	3-08	NUT	2
9	3-09	HYD. TANK COVER PLATE	1
10	3-10	FILTER ASSEMBLY	1
11	3-11	STUD	8
12	3-12	CHASSIS ASSEMBLY	1
13	3-13	ENGINE MOUNTING	1
14	3-14	HANDLE BAR MOUNTING	1
15	3-15	ADJUSTMENT HANDLE	1
16	3-16	ROLL PIN	1
17	3-17	NYLON WASHER	1
18	3-18	WASHER	1
19	3-19	PIN	1
20	3-20	WASHER	1

ITEM	PART No.	DESCRIPTION	QTY
21	3-21	NYLON WASHER	1
22	3-22	WASHER	1
23	3-23	LOCKNUTS	2
24	3-24	TINE CASING	1
25	3-25	DRAIN PLUG	1
26	3-26	AXLE BUSH	2
27	3-27	SEAL	2
28	3-28	FELT	2
29			
30			
31			
32			
33			
34			
35			
36			
37			
38			
39			
40			

CHASSIS ASSEMBLY, DRIVE MOTOR & HYDRAULIC FILTER

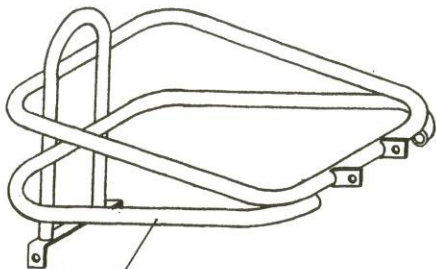


HYDRAULIC CONTROL VALVE ASSEMBLY

ITEM	PART No.	DESCRIPTION	QTY
1*	7-01	CONTROL VALVE BODY	1
2*	7-02a	VALVE SPOOL RHS	NSS
	7-02b	VALVE SPOOL LHS	NSS
3	7-03	ROLL PIN	4
4	7-04	EXTERNAL CIRCLIP	4
5	7-05	TEFLON BACK RING	4
6	7-06	O-RING	4
7	7-07	DETENT SPRING	2
8	7-08	DECAL (CONTROL VALVE)	1
9	7-9	BLACK KNOB	2
10	7-10	HANDLE	2
11	7-11	SET SCREW	2
12	7-12	HYDRAULIC ADAPTOR	1
13	7-13	1/8" PIPE PLUG	2
14	7-14	HADRAULIC ADAPTOR	2
15	7-15	HYDRAULIC ADAPTOR	3
16	7-16	BOLT	2
17	7-17	NUT - Nyloc	2

- NOT SOLD SEPERATELY

HYDRAULIC CONTROL VALVE ASSEMBLY

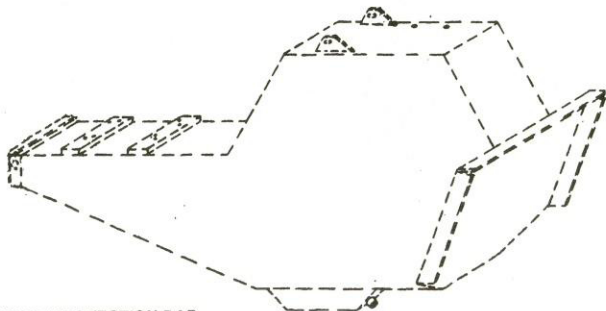


1



2

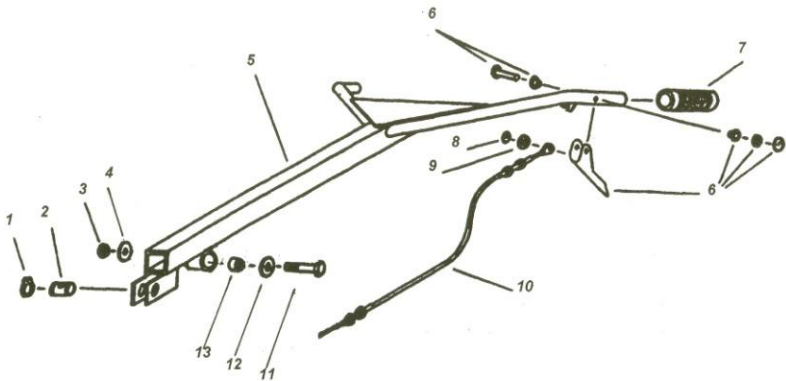
3



ENGINE PROTECTION BAR

ITEM	PART No.	DESCRIPTION	QTY
1	6-01	ENGINE PROTECTION BARS	1
2	6-02	SET SCREW	2
3	6-03	WASHER	2
4			
5			
6			
7			
8			
9			
10			
11			
12			
13			
14			
15			
16			
17			
18			
19			
20			

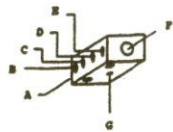
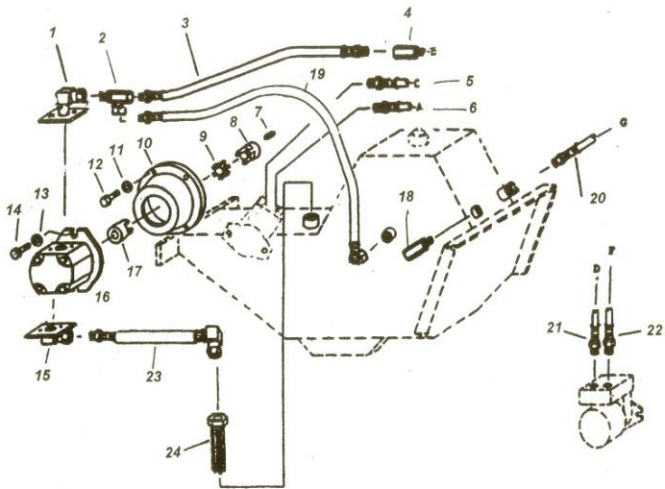
ENGINE PROTECTION BAR



HANDLE BAR ASSEMBLY

ITEM	PART No.	DESCRIPTION	QTY
1	4-01	CIRCLIP	1
2	4-02	PIN	1
3	4-03	NUT (NYLOC)	1
4	4-04	WASHER	1
5	4-05	HANDLEBAR	1
6	4-06	LEVER ASSEMBLY COMPLETE	1
7	4-07	HANDLE GRIP	2
8	4-08	CLIP	1
9	4-09	WASHER	1
10	4-10	CABLE	1
11	4-11	BOLT	1
12	4-12	WASHER	1
13	4-13	BUSH	2
14			
15			
16			
17			
18			
19			
20			

HANDLE BAR ASSEMBLY

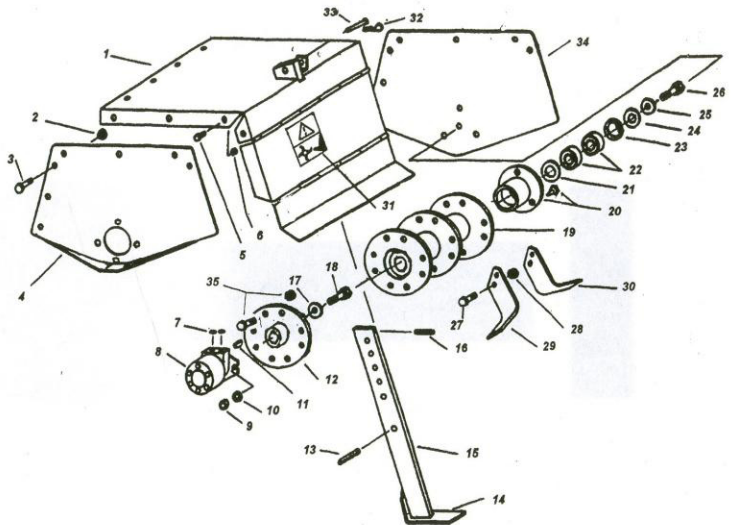


HYDRAULIC PUMP ASSEMBLY, HOSES AND FITTINGS

ITEM	PART No.	DESCRIPTION	QTY
1	5-01	PUMP FLANGED COUPLING	1
2	5-02	"T" PIECE	1
3	5-03	HOSE	1
4	5-04	RELIEF VALVE	1
5	5-05	HOSE	1
6	5-06	HOSE	1
7	5-07	KEY	1
8	5-08	ENGINE COUPLING	1
9	5-09	SPIDER	1
10	5-10	ADAPTOR PLATE	1
11	5-11	WASHER	4
12	5-12	STUD	4
13	5-13	WASHER	2
14	5-14	STUD	2
15	5-15	PUMP FLANGED COUPLING	1
16	5-16	HYDRAULIC PUMP	1
17	5-17	PUMP COUPLING	1
18	5-18	DRIVE WHEEL RELIEF VALVE	1
19	5-19	HOSE	1
20	5-20	HOSE	1

ITEM	PART No.	DESCRIPTION	QTY
21	5-21	HOSE	1
22	5-22	HOSE	1
23	5-23	SUCTION HOSE	1
24	5-24	SUCTION SCREEN	1
25			
26			
27			
28			
29			
30			
31			
32			
33			
34			
35			
36			
37			
38			
39			
40			

HYDRAULIC PUMP ASSEMBLY, HOSES AND FITTINGS



TINE BOX ASSEMBLY

ITEM	PART No.	DESCRIPTION	QTY
1	2-01	TYNE COVER	1
2	2-02	NUT 3/8 NF NYLOC	9
3	2-03	BOLT 3/8 X 1" BOLT	9
4	2-04	SIDE PLATE (MOTOR)	1
5	2-05	BOLT 5/16 X 3/4 NF	12
6	2-06	NUT 5/16 NF-**-*	12
7	2-07	WASHER	2
8	2-08	MOTOR	1
9	2-09	NUT 1/2 NF	2
10	2-10	WASHER 5/16	2
11	2-11	KEY	1
12	2-12	DRIVE HUB	1
13	2-13	ROLL PIN	1
14	2-14	DEPTH BAR	1
15	2-15	DEPTH BAR WITH SHOE	1
16	2-16	ROLL PIN	1
17	2-17	WASHER	1
18	2-18	SCEW M10 X 50	1
19	2-19	TYNE SHAFT	1
20A	2-20	BEARING HOUSING	1
20B	2-21	BEARING HOUSING BOLTS	3

ITEM	PART No.	DESCRIPTION	QTY
21	2-22	WASHER	1
22	2-23	BEARING	2
23	2-24	CIRCLIP	1
24	2-25	WASHER	1
25	2-26	WASHER	1
26	2-27	SCREW	1
27	2-28	BOLT	24
28	2-29	NUT	24
29	2-30	TYNE LH	6
30	2-31	TYNE RH	6
31	2-32	SAFETY SIGN	1
32	2-33	PIN	1
33	2-34	CLIP	1
34	2-35	SIDE COVER	1
35			
36			
37			
38			
39			
40			

TINE BOX ASSEMBLY